



# USB 2.0 All-in-1 Hubreader

Manual

Quick Installation Guide



**IR-8100**  
**IR-8110**

## Introduction

Thanks for purchasing USB 2.0 All-in-1 Hubreader. This Hubreader provides the most convenient and fastest solution for a variety of memory cards to read or write files, and 3 additional USB ports. It provides four card slots for CF Type I / Type II / MS / MS PRO/MS Duo / MS PRO Duo / SD/ SM / MMC / RSMMC / Micro Drive Card/Mini SD / SDHC / xD Card. And the 3 USB ports allow users to add multiple higher performance peripherals, such as high-resolution video conferencing cameras, USB 2.0 scanners, printers, and fast storage devices.

## Package Contents

- USB 2.0 All-in-1 Hubreader
- Installation Driver
- User's Manual
- USB 2.0 Cable
- Switching Power Adaptor(optional)

## Features

- Compliant with USB specification version 2.0.& 1.1.
- Plug & Play - automatic detection and installation of peripherals.
- Hot swappable
- Connects up to 127 devices with additional hubs
- Supports different data transfer rate at 480Mbps, 12Mbps and 1.5Mbps.
- Supports self-powered mode.
- Supports Over-current detection and individual power control
- Supports both OHCI and EHCI
- USB bus powered, no external power is needed.  
Convenient and fast data exchange.  
(MP3, PDA, Digital Camera, data, etc...).



## System Requirements

IBM<sup>®</sup> PC or Macintosh<sup>®</sup> computer with USB 2.0 or USB 1.1 port.

Operation Systems :

- Windows<sup>®</sup> 98/SE(Driver required)
  - Windows<sup>®</sup> 2000
  - Windows<sup>®</sup> XP
  - Windows<sup>®</sup> Vista<sup>™</sup>
  - Macintosh<sup>®</sup> OS 8.6(Driver required)
  - Macintosh<sup>®</sup> OS 9.X(Driver required)
  - Macintosh<sup>®</sup> OS X 10.1 or later
- ※ Cardreader on Windows<sup>®</sup>98/SE and some Mac<sup>™</sup> OS above has to install automatically.  
Please contact below website to download driver.

**[www.i-rocks.com](http://www.i-rocks.com)**

## How to Use

### • USB 2.0 All-in-1 Hubreader in Windows® OS

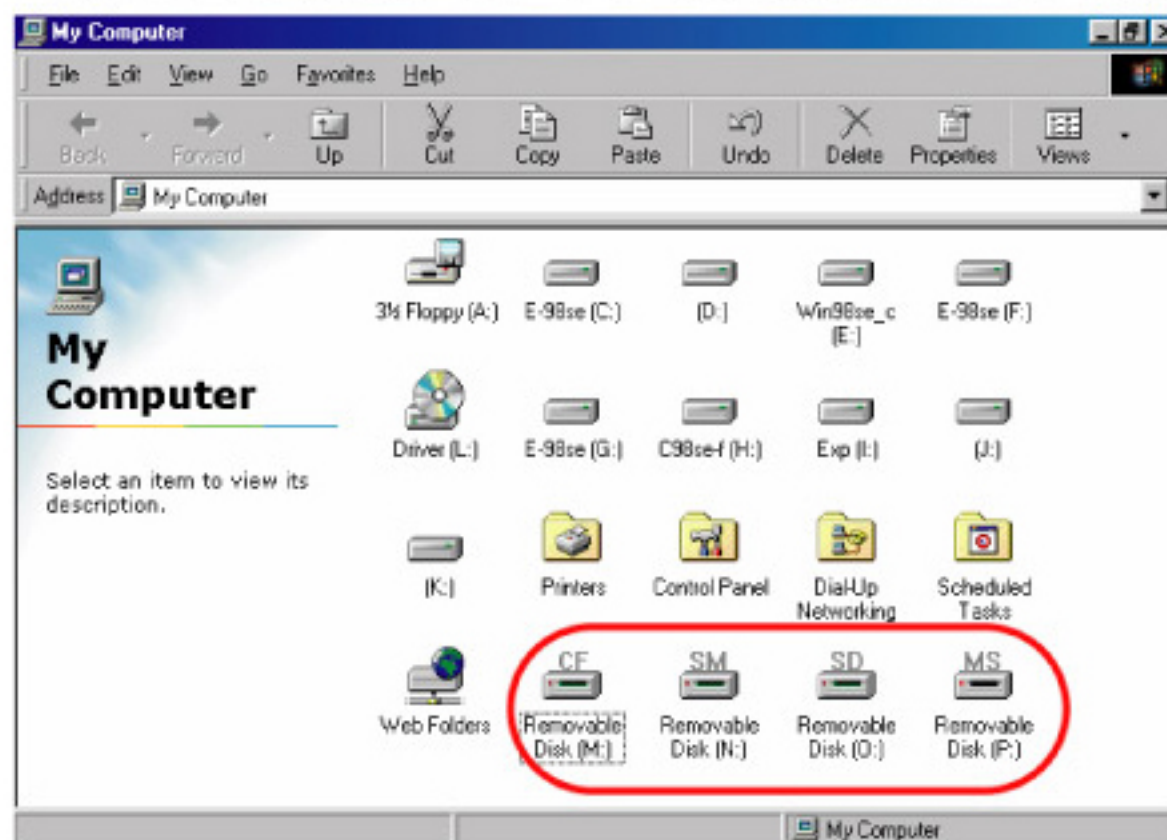
#### ※ Note1 :

- It's welcome to download the application program of discrimination from the website.
- Windows® 98/SE required driver installation, please contact website to download.

**Step1 :** Connect USB 2.0 12 in 1 Hubreader to the computer's USB port.

**Step2 :** Your computer will automatically recognize the USB 2.0 All-in-1 Hubreader and register new devices.

**Step3 :** USB 2.0 All-in-1 Hubreader is ready to use.





• **USB 2.0 All-in-1 Hubreader in Mac™ OS**

※ Note2 :

- For Mac™ OS 8.6 to 9.0.4 has to install driver, please contact website to download.
- For Mac™ X 10.1.2 or later, is driver-free, doesn't have to install any driver. It will detect and install automatically.

Step1 : Connect USB 2.0 12 in 1 Hubreader to the computer's USB port.

Step2 : Insert the memory card to the slot, the drive icon will appear on the desktop, all procedures may be manipulated as a Mac™ Hard Disk.

Step3 : To change memory cards : Drag and drop the drive icon you wish to change into the trashcan. Remove existing memory card, and insert a new card you wish to use into USB 2.0 All-in-1 Hubreader, new drive icon will appear in few seconds. All procedures may be manipulated again as a Mac™ HardDisk.

**Step4** : To disconnect USB 2.0 All-in-1 Hubreader:  
 Drag and drop all drive icons into trashcan,  
 and unplug USB 2.0 All-in-1 Hubreader  
 from the computer to disconnect.

## Warning










Do not remove or insert memory card and disconnect USB connec data is transmitting to avoid improper shut down. To confirm if transmission is completely finished, you may open the transmitted files to confirm.

## Specifications

Basic Power Consumption	300mA
Limit Current Protection	1250mA
Root (stream) Port	1 series-B receptacle
Downstream Ports	3 series-A receptacles
Voltage per Port	DC +5V
Output Current per Port	500mA(with power adapter)
Operating Temperature	0°C ~40°C
Humidity	0%~80% RH
Safety	CE, FCC



• **Memory Card Supported :**

Cards	Card Type	Adapter Required
 <b>Compact Flash Microdrive</b>	<ul style="list-style-type: none"> <li>• CF Type I/II</li> <li>• IBM MicroDrive</li> </ul>	<ul style="list-style-type: none"> <li>• None</li> <li>• None</li> </ul>
 <b>SD Card</b>   <b>Mini SD</b>	<ul style="list-style-type: none"> <li>• SD</li> <li>• SD v1.1</li> <li>• SDHC</li> <li>• Mini SD</li> <li>• Micro SD</li> <li>• Trans Flash</li> </ul>	<ul style="list-style-type: none"> <li>• None</li> <li>• None</li> <li>• None</li> <li>• Required</li> <li>• Required</li> <li>• Required</li> </ul>
 <b>MMC</b>   <b>RS MMC</b>	<ul style="list-style-type: none"> <li>• MMC</li> <li>• MMC 4.0</li> <li>• RS_MMC</li> <li>• RS_MMC 4.0</li> <li>• MMC Micro</li> </ul>	<ul style="list-style-type: none"> <li>• None</li> <li>• None</li> <li>• Required</li> <li>• Required</li> <li>• Required</li> </ul>
 <b>Memory Stik</b>   <b>Memory Stick</b>	<ul style="list-style-type: none"> <li>• MS</li> <li>• MS Pro</li> <li>• MS Duo</li> <li>• MS Pro Duo</li> <li>• MS M2 (MS Micro)</li> </ul>	<ul style="list-style-type: none"> <li>• None</li> <li>• None</li> <li>• None</li> <li>• None</li> <li>• Required</li> </ul>
 <b>Smart Media</b>	<ul style="list-style-type: none"> <li>• SM</li> </ul>	<ul style="list-style-type: none"> <li>• None</li> </ul>
 <b>XD Card</b>	<ul style="list-style-type: none"> <li>• XD</li> <li>• XD M</li> <li>• XD H</li> </ul>	<ul style="list-style-type: none"> <li>• None</li> <li>• None</li> <li>• None</li> </ul>